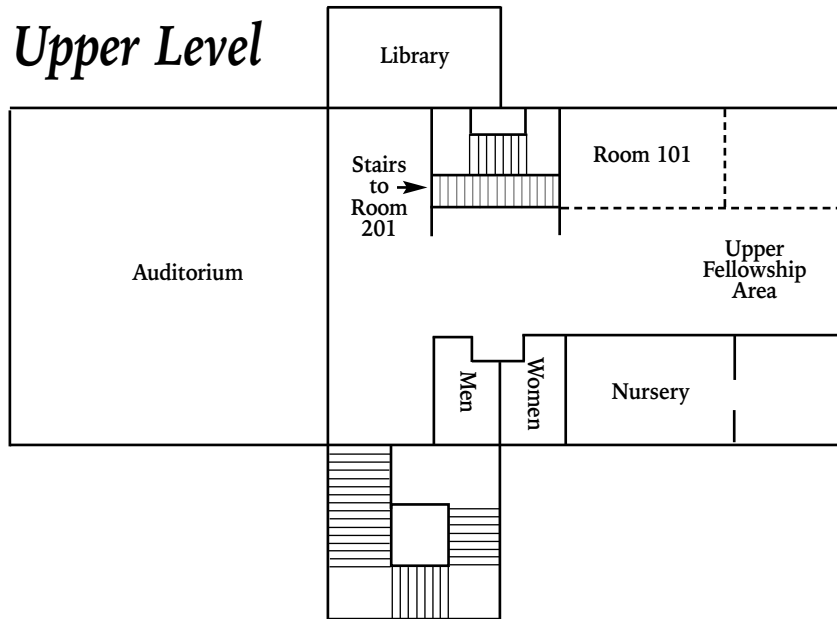
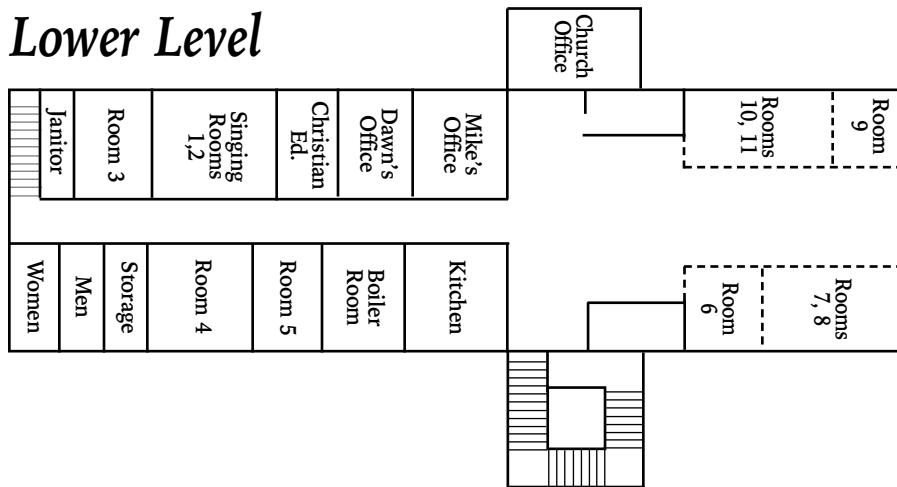


## Upper Level



## Lower Level



# Sunday School

Plains Mennonite Church

December 2011  
January, February 2012

*Bring friends!*

# List of Classes

Room numbers can be found on the map on the back.

## Schedule

### Preschool-Grade 5

Sunday School: 9:00-9:50 a.m.

Singing Time: 9:50-10:05 a.m. (Rooms 1&2)

### NURSERY & TODDLER: (infant to age 2—as of September 2011)

*Upper Level Nursery*, Teachers: Janelle Mirarchi & Grace Freed

### PRESCHOOL: (ages 3 & up—as of September 2011)

*Lower Level, Room 4*, Teacher: Patti Freed

### PRIMARY: Grades K-2

*Lower Level, Room 5*, Teacher: Priscilla Rose

### MIDDLER: Grades 3-5

*Lower Level, Room 3*, Teacher: Arleen Godshall

### JUNIOR HIGH SCHOOL YOUTH: Grades 6-8

*Rooms 10 & 11*; Teacher: Rina Rampogu

### HIGH SCHOOL YOUTH: Grades 9-12

*Room 201*; Teachers: December—Dawn Derstine; January and early February—Steve Landis; February—Rob Kerns

## Children's Sunday School Project SEND MANISE TO SCHOOL

Our children's offering will support Manise, our 2nd grade girl in Haiti, to attend school for a year. Most young girls in Haiti don't have the opportunity to attend school. \$174 covers the cost of personal school supplies, a uniform, and one meal a day for Manise for one year. Any extra collected will be sent to support her school through the MAMA Project Haiti Scholarship.

# Adult Classes

Room numbers can be found on the map on the back.

## CLASS 1 & 2: POSTHIGH TO THOSE BORN IN 1958

This class will be studying the book, *The Myth of a Christian Nation*, by Greg Boyd. In an election year, this book raises questions with the church's uncritical support of political parties and will stimulate discussion around the intersection of faith and politics.

*Lower Level, Room 9*

**Shepherd:** Dawn Ranck

**Teacher Coordinator:** Jeff Hackman

The other three adult classes will use the Adult Bible Study Guide with the theme: "God Establishes a Faithful People." Jim Engle is the writer for the winter quarter, with lessons in December and January taken from the book of Genesis. In February the lessons will focus on the book of Galatians.

## CLASS 3: BORN BETWEEN 1941-1957

*Lower Level, Rooms 7 & 8*

**Shepherd:** Glenda Moyer

**Teacher Coordinator:** Sara Kolb

## CLASS 4: BORN BETWEEN 1929-1940

*Upper Fellowship Area*

**Shepherd:** Dan Lapp

**Teacher Coordinator:** Merlin Grieser

## CLASS 5: BORN BEFORE 1928

*Upper Level, Room 101*

**Shepherd:** Harvey Freed

**Teachers:** Wally Wolff & Paulus Thalathoti